

Tangas Flow 2016net

Gas-Detection Unit

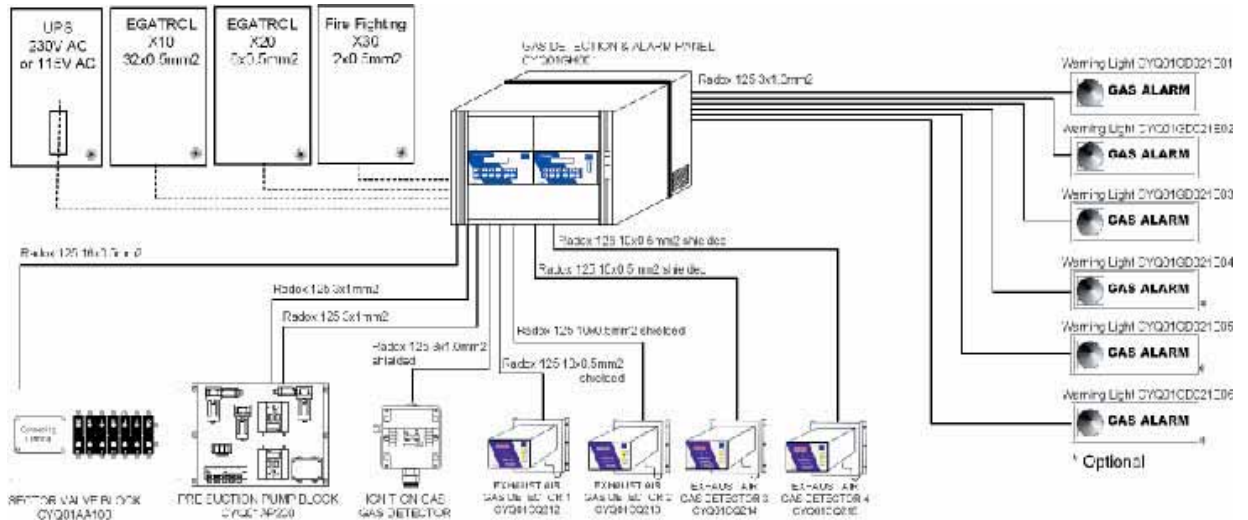


Doc: 0-3-4-13-35000-A-PP E



Tangas Flow 2016net

for explosive Gas



NDIR Analyser for explosive gas with 1- measuring point

Analyser for the measurement of explosive gas with pump by-pass process.

Indication of the gas concentration and the alarm status. The activation of the integrated solenoid valve block for the automatic zero point and/or sensitivity calibration.

The system can be adapted to all customized requirements simply with the password protected menu structure.

The configuration of the alarm organization is very simply realized with the integrated alarm matrix.

Technical specifications:

Type of device:	Tangas Flow 2016net
Power Supply:	24V DC
Power Cons.:	25W
Operating temp.:	-20°C to +50°C (short time 60°C)
Rel. Humidity:	< 99% H.rel.
Signal Output:	1x4-20 mA (max. 250 ohms)
Digital-Output:	4 Logic signal for AI. 1-4 1 Logic signal for Sensor fault 1 Logic signal for Cal. mode * 1 Logic signal for Calibration status 1 Logic sign. for maintenance alarm
Network:	TCP/IP RS232C CAN Bus (in preparation)
Remote control:	with TCP/IP
Data pick out:	with FTP
Event Recorder:	for max. 4000 events
Temp. Recorder:	for max. 4000 events

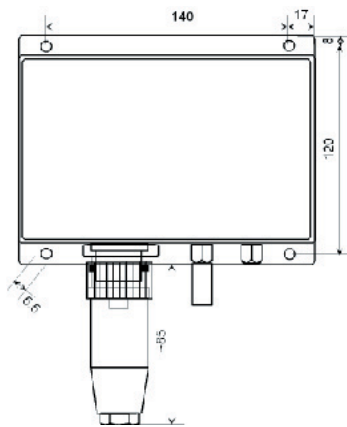
* Note dew point of sampling

Part.-No. 00-91-35000-A



Dimensions:

Type of device: Wall mounting Unit Aluminum
 Painting: Powder coating RAL 7035 / 5002
 Rating: IP65
 Dimensions: 175 x 135 x 300mm
 Weight: 3,5 kg



El. connections:

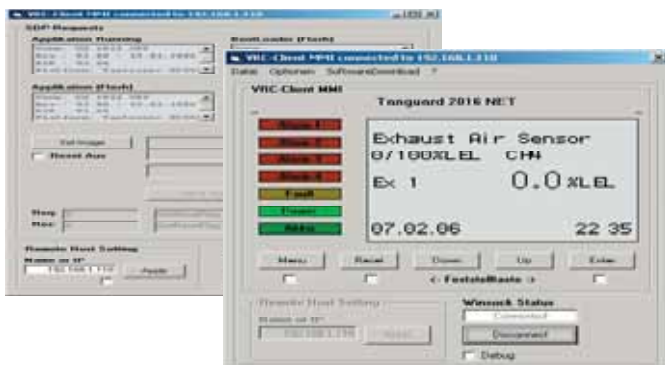
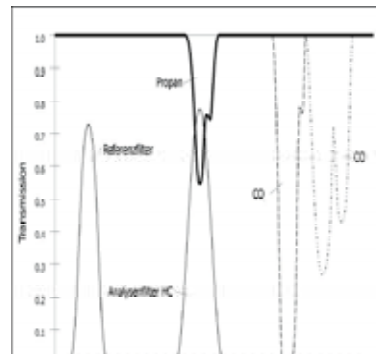
Power Supply and data: 14 pole Plug
 TCP/IP RJ45

Pneumatic connections:

Push plug-in: 2x6mm

Technical data IR-Sensor:

Gas: Methan CH₄
 Meas. procedure: ND-Infrared Detector
 Measuring range: 0-100% LEL
 T90-time: < 10sec.
 Accuracy: +- 2% FS
 Stability: < +- 2% / month
 Zero-Drift: < +- 1% / month
 Operating temp.: -20°C to +50°C (60°C short time)
 Humidity rel.: < 99% H.rel.
 Warm up time: 1 h



Remote control:

With Web Interface